



## **Museum Landscape Transformation: Suitability Assessment Analysis and Design Model Development**

**Agustinus Denny<sup>1\*</sup>, Liyushiana,<sup>2</sup> Ananda Pratiwi Panjaitan<sup>3</sup>, Joy Ferry Ando Sinaga<sup>4</sup>, Septi Anggina Sitinjak<sup>5</sup>**

<sup>1</sup>Politeknik Pariwisata Medan, Jl. Rumah Sakit H. No.12, Kenangan Baru, Kec. Percut Sei Tuan, Kabupaten Deli Serdang, Sumatera Utara 20371, Indonesia

<sup>2</sup>Politeknik Pariwisata Medan, Jl. Rumah Sakit H. No.12, Kenangan Baru, Kec. Percut Sei Tuan, Kabupaten Deli Serdang, Sumatera Utara 20371, Indonesia

<sup>3</sup>Politeknik Pariwisata Medan, Jl. Rumah Sakit H. No.12, Kenangan Baru, Kec. Percut Sei Tuan, Kabupaten Deli Serdang, Sumatera Utara 20371, Indonesia

<sup>4</sup>Politeknik Pariwisata Medan, Jl. Rumah Sakit H. No.12, Kenangan Baru, Kec. Percut Sei Tuan, Kabupaten Deli Serdang, Sumatera Utara 20371, Indonesia

<sup>5</sup>Politeknik Pariwisata Medan, Jl. Rumah Sakit H. No.12, Kenangan Baru, Kec. Percut Sei Tuan, Kabupaten Deli Serdang, Sumatera Utara 20371, Indonesia

\*Corresponding author's email: [sparksdenny@gmail.com](mailto:sparksdenny@gmail.com)

### **Abstract**

Museums play a pivotal role in the tourism industry, offering cultural and educational experiences to visitors. To remain competitive, museums must develop distinctive landscape and facility designs that enhance their appeal as tourist destinations. This research focuses on Rahmat International Wildlife Museum and Gallery, a private museum in Indonesia, aiming to improve its landscape and facility design to create a more captivating visitor experience. Using Minister of Tourism and Creative Economy Regulation No. 4 of 2021 as a benchmark, the study evaluates Rahmat Museum's compliance with business standards for private museums. The research adopts a qualitative approach, including in-depth interviews, direct observations, and a literature review. Findings indicate that the museum excels in visitor convenience, hygiene, and engagement but requires improvements in waste management, community involvement, and physical accessibility. To enhance Rahmat Museum's landscape and facility design, the study proposes three key enhancements: an accessibility ramp, an accessible toilet, and separate waste storage. These recommendations aim to ensure inclusivity, convenience, and environmental sustainability. Implementing these proposals is expected to address non-compliance issues and elevate Rahmat International Wildlife Museum and Gallery's status as a premier tourist destination. This research offers valuable insights for other private museums seeking to enhance their landscape and facility designs to attract visitors and ensure business sustainability.

**Keywords:** Landscape design, museum, suitability assessment, tourism business-standard

## **1. INTRODUCTION**

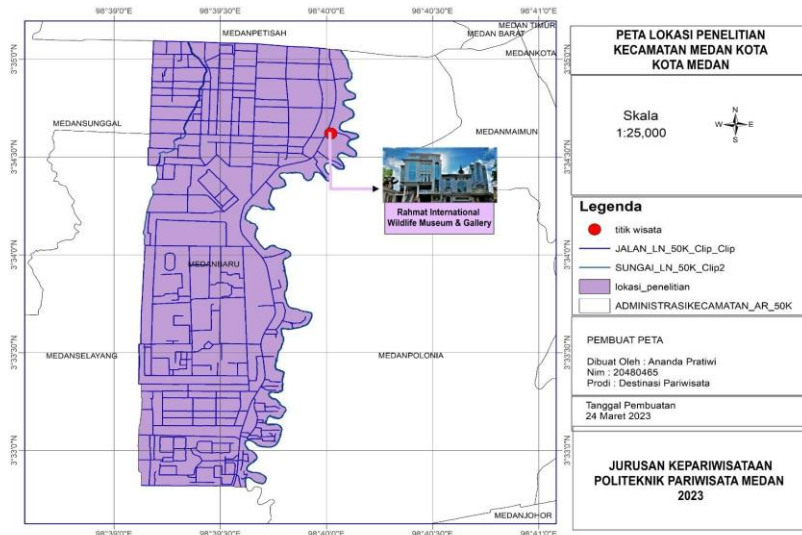
Museums, as tourist attractions, have emerged as integral components of the tourism industry, offering insights into culture, history, art, and nature to visitors (Luca, 2019; Messina, 2018). In an increasingly competitive landscape within the tourism sector, museums must distinguish themselves to serve as compelling tourist destinations (Astono, 2018; Castillo & Zegarra, 2020; Kabassi et al., 2019; Lopez-Menendez, 2019; Tavčar, 2016). One effective approach to achieve this is through the creation of unique and visually appealing landscape and facility designs that can form an intrinsic part of a museum's identity (Amalia & Hanika, 2021; Dulyan, 2010; Indrianty & Rahma, 2019; Kabassi, 2018; Kabassi et al., 2019; Kostoska, 2016; Putra & Mukminan, 2018; Schulmeister, 2020).

The landscape and facility design of a museum can serve as a potent Unique Selling Point (USP), compelling tourists to visit (Amalia & Hanika, 2021; Diniyah et al., 2018; Nuzura et al., 2016; Peng, 2022; Teker, 2016). During fierce competition for attention, the development of unique characteristics and visual allure within the landscape and facility design can elevate a museum's



status as a tourist destination (Gutowski & Kłos-Adamkiewicz, 2020; Kersten, 2018; Lin et al., 2019).

In the context of this research, the primary focus is on the Rahmat International Wildlife Museum and Gallery. The selection of Rahmat International Wildlife Museum and Gallery as the research site is justified by several compelling reasons. Firstly, the museum possesses substantial potential to emerge as a captivating tourist destination, with its invaluable collection showcasing remarkable biodiversity. Secondly, it stands as an exemplary private museum of prominence within the Indonesian museum industry. Hence, this research aims to examine how the landscape and facility design at Rahmat International Wildlife Museum and Gallery can be enhanced to create a more captivating visitor experience. Figure 1 below shows the location of Rahmat International Wildlife Museum and Gallery.



**Figure 1.** Location of Rahmat International Wildlife Museum and Gallery

This study will employ the Minister of Tourism and Creative Economy Regulation No. 4 of 2021 as a benchmark for assessing the business standards of private museums in Indonesia. This is a pertinent step as the regulation provides valuable guidelines for the operation and management of museums, including landscape and facility design (Nababan et al., 2023). By evaluating the museum's compliance with these regulations, this research will ascertain the extent to which the museum meets the business standards stipulated by tourism authorities (Castillo & Zegarra, 2020; Messina, 2018). Subsequently, the research will concentrate on the development of a landscape design model tailored to the characteristics of Rahmat International Wildlife Museum and Gallery. This model will be devised to enhance the museum's visual appeal and create an enchanting environment for visitors, contributing to the museum's growth as a premier tourist destination.

Thus, this research not only aims to enhance the quality of Rahmat International Wildlife Museum and Gallery as a tourist destination but also seeks to provide valuable insights for other private museums in developing their landscape and facility designs to enhance attractiveness and business sustainability.

## 2. RESEARCH METHODOLOGY

This research employs a qualitative approach, emphasizing a profound understanding of the phenomena under investigation through description, interpretation, and context (Creswell, 2007). The qualitative approach is suitable for this research as it allows researchers to delve into the complex aspects of landscape design and museum facilities, gaining deeper insights into visitor experiences and museum practices that cannot be quantitatively measured (Creswell, 2018). The qualitative approach utilized in this study adopts the interactive approach developed by Miles, Huberman, and Saldana (Miles et al., 2014). The interactive approach introduced by Miles, Huberman, and Saldana

is well-suited for this research as it provides a systematic framework for collecting, organizing, and analyzing qualitative data. This approach emphasizes the interactive process in developing understanding, enabling in-depth exploration of factors influencing landscape design and museum facility development.

Data collection is carried out through three methods: (1) In-depth Interviews: The use of in-depth interviews allows researchers to gain insights from key stakeholders such as museum management, visitors, and landscape experts. This aids in understanding their perceptions of landscape design and museum facilities and assessing the extent to which the museum complies with established business standards. (2) Direct Observation: Direct observation enables researchers to closely observe the physical conditions and visitor experiences within the museum. This helps identify specific aspects requiring enhancement in landscape design and facilities. (3) Literature Review: The collection of secondary data through a literature review provides a theoretical foundation and understanding of recent developments in museum landscape design and related business standards.

Research instruments, including interview questions and observation guidelines, will be structured based on the Minister of Tourism and Creative Economy Regulation No. 4 of 2021 on Standards for Private Museum Business Operations with Code 91022. This regulation categorizes museum aspects into different categories, including facilities, organizational structure and human resources, services, product business requirements, and business management systems. By using this standard as a guide, the research will measure the extent to which the Rahmat International Wildlife Museum and Gallery adheres to the business standards set by tourism authorities.

Finally, AutoCAD will be employed as an analytical tool to design and develop a landscape model aligned with the museum's characteristics. The primary benefit of utilizing AutoCAD lies in its ability to create highly detailed and accurate visual models, enabling researchers to realistically visualize changes in landscape design. This aids in identifying necessary improvements and presenting concrete recommendations for museum development.

### 3. FINDINGS AND DISCUSSION

#### 3.1 Profile of Rahmat International Wildlife Museum and Gallery

The Rahmat International Wildlife Museum and Gallery is situated at Jl. S. Parman No. 309, Medan, 20112, North Sumatra, Indonesia. It is the only museum in the world that boasts a collection of over 2600 species of wild animals from various countries. The Rahmat International Wildlife Museum and Gallery was inaugurated on May 14, 1999, by the Minister of Education and Culture of the Republic of Indonesia, Prof. Dr. Juwono Sudarsono, MA. This museum and gallery have been recognized in the Record Book and have received numerous national and international awards in the fields of conservation, preservation, and the prevention of the extinction of wildlife and their habitats. Due to the significant public interest, an impressive and grand expansion of the building was undertaken. The current building covers an area of over 3000 square meters and was inaugurated by the 6th President of the Republic of Indonesia, Dr. H. Susilo Bambang Yudhoyono.

The founder is a conservationist and nature enthusiast who has ventured to various corners of the world to directly study the concept of "conservation through utilization." The Safari Club International (SCI) USA concept, has been implemented by various countries, including the United States, Canada, Russia, Germany, Turkey, France, Italy, Spain, Austria, China, Kazakhstan, Romania, Iran, Pakistan, Australia, New Zealand, Africa, and others, aims to prevent the extinction of wild animals while preserving their forest habitats.

#### 3.2. Suitability Assessment

This study employs the standards stipulated by the Minister of Tourism Regulation No. 4 of 2021 regarding the standards for business activities in risk-based business licensing within the tourism sector to assess the suitability of facility and landscape designs at the Rahmat International Wildlife Museum and Gallery. Several elements of suitability assessment outlined in this regulation encompass: Facilities, Organizational Structure and Human Resources, Services, Business Product Requirements, and Business Management Systems. Concerning the facilities aspect, there exist sub-elements to be evaluated, namely, the sub-element of minimum museum business facilities (as

elucidated in Table 1), the sub-element of minimum facilities (as elucidated in Table 2), and the sub-element of environmental conditions (as elucidated in Table 3).

**Table 1.** Suitability Assessment of Minimum Museum Business Facility Sub-Elements

Assessment Criteria	Check	Suitability Description
Clean administrative area equipped with office supplies	✓	A clean office with complete office supplies can enhance productivity and efficiency.
Functioning communication equipment	✓	Staff typically communicate via office phones.
Collection storage	✓	Space is available for storing items
Museum equipment repair and storage area	✓	Rooms are available for equipment repair and collection storage.
Fire Extinguishers (APAR) and First Aid Kits (P3K)	✓	APARs are regularly checked for expiration. P3K boxes are located in the prayer room.
Temporary trash containers	✓	Located at the parking entrance corner
Safe and compliant electrical installations	✓	The museum's electrical system meets safety standards
Clean water installations meet hygiene and sanitation requirements	✓	The museum's water installations meet cleanliness and sanitation standards.
Functional closed-circuit television (CCTV) installations	✓	Installed CCTV cameras continuously operate.
Worship area with complete facilities for employees	✓	The prayer room is complete with worship materials and can be used by both employees and the public
Visible and legible museum signage, meeting points, and evacuation route maps	✓	All signage and information boards are visible and easily readable
Storage area for belongings;	✓	Located near the exit door.

The assessment in Table 1 focused on the suitability of minimum museum business facility sub-elements at Rahmat International Wildlife Museum and Gallery. The findings indicate that the museum maintains a clean administrative area with complete office supplies, functional communication equipment, and adequate collection storage facilities. Furthermore, designated spaces for museum equipment repair and collection storage are available. Fire safety and first aid provisions, as well as the presence of temporary trash containers, contribute to a safe and organized environment. The museum's electrical and water installations meet safety and hygiene standards, while operational CCTV installations enhance security. Additionally, the provision of a worship area for employees, visible museum signage, and accessible storage areas for visitors' belongings add to the overall positive visitor experience.

**Table 2.** Suitability Assessment of Minimum Facility Sub-Elements in Support of Museum Business Activities

Assessment Criteria	Check	Suitability Description
Clean, safe, and well-maintained parking facilities	✓	There are clean and safe parking facilities.
Service stalls equipped with tables and chairs	✓	Service stalls are available.
Visitor belongings storage area	✓	There is a visitor belongings storage area at the security post.

Sale of food and drinks meeting hygiene and sanitation requirements	✓	Sale of food and drinks complies with cleanliness and sanitation standards.
Clean and easily accessible dining areas	✓	Clean and easily accessible dining areas are provided.
Accessible souvenir sales area for visitors	✓	The souvenir sales area is easily accessible to visitors, located in the café and souvenir room on the 2nd floor
Covered trash containers	✓	In compliance
Clean and well-maintained restrooms;	✓	In compliance
Clean and well-maintained worship space with complete facilities	✓	There is a clean and well-maintained worship space.
Accessibility with gradual ramps for physical limitations	-	The museum does not have gradual ramp facilities.

The findings from Table 2, assessing the suitability of minimum facility sub-elements supporting museum business activities at Rahmat International Wildlife Museum and Gallery, reveal several noteworthy points. The museum exhibits a commitment to visitor convenience and hygiene by providing clean, safe, and well-maintained parking facilities, service stalls with tables and chairs, and accessible visitor belongings storage. Moreover, their compliance with hygiene and sanitation standards in the sale of food and drinks, coupled with clean and easily accessible dining areas, ensures a positive dining experience. The museum further facilitates visitor engagement by offering easy access to souvenir sales areas located in the café and souvenir room on the 2nd floor. Adequate trash containers and well-maintained restrooms enhance visitor comfort and uphold cleanliness standards. Additionally, the provision of a clean and well-maintained worship space attests to the museum's inclusivity and dedication to visitor needs. However, it is worth noting that the museum lacks facilities for physical accessibility, such as gradual ramps, which may need consideration to ensure inclusivity for all visitors. Overall, these findings underscore the museum's commitment to providing a positive and convenient experience for its visitors while highlighting areas for potential improvement in accessibility.

**Table 3.** Suitability Assessment of Environmental Condition Sub-Elements

Assessment Criteria	Check	Suitability Description
Partnership and/or involvement of the local community	-	There is no direct involvement of the local community.
Separate covered bins for organic and non-organic waste are available	✓	Available in front of the security post, while other bins mix the waste.
Provision of temporary storage for organic and inorganic waste	-	Not available.
No damage or alteration to the condition of cultural collections	✓	In compliance
Education of tourists, workers, and the community to preserve cultural values and heritage, including art objects, cultural heritage collections, and replicas of cultural heritage.	✓	The museum educates anyone who visits, either directly or indirectly

The findings in Table 3, evaluating the suitability of environmental condition elements at Rahmat International Wildlife Museum and Gallery, provide valuable insights. While the museum maintains separate covered bins for organic and non-organic waste in some areas, waste is mixed in others, suggesting room for improvement in waste management practices. The absence of direct local community involvement presents an opportunity for the museum to strengthen its engagement with



the community. On a positive note, the museum complies with preserving the condition of cultural collections and actively engages in educating visitors, employees, and the community about cultural preservation. This proactive approach aligns with the museum's mission to promote cultural values and heritage. To enhance its environmental sustainability, the museum may consider further waste management improvements and increased involvement with the local community in its conservation efforts.

**Table 4.** Suitability Assessment of Organizational Structure Sub-Elements

Assessment Criteria	Check	Suitability Description
Complete and documented organizational structure	✓	A complete and well-documented organizational structure exists within this museum's operations.
Documented job descriptions	✓	Job descriptions within the organization have been well-documented.
Domestic product usage program	✓	The museum is committed to prioritizing domestic products, although, in some cases, foreign products may be unavoidable
Access provision program for creative economy actors in value-added product development	✓	ocused on souvenirs (keychains, woven bags).
Occupational Health and Safety (OHS) implementation	✓	Occupational Health and Safety (OHS) is implemented in Rahmat Museum's operations.
Documented company rules or regulations	✓	Well-documented company rules or regulations are in place.
Implementation of document preservation and storage programs related to museum business activities	✓	The preservation and storage program related to museum business activities is carried out
Implementation of collection conservation programs	✓	Collection conservation programs are implemented within the museum's operations
Implementation of exhibition programs	✓	Exhibition programs are implemented within the museum's operations.
Implementation of building cleanliness and maintenance programs	✓	Cleanliness and maintenance programs for the building are implemented within the museum's operations.
Management performance evaluation implementation	✓	Management performance evaluation is carried out within the museum's operations.

The findings from Table 4, assessing the suitability of organizational structure sub-elements at Rahmat International Wildlife Museum and Gallery, reveal several positive aspects regarding its organizational structure and management practices. The presence of a well-documented organizational structure and job descriptions demonstrates a commitment to clear roles and responsibilities within the museum. Additionally, the museum actively engages in promoting domestic product usage, particularly in its field of wildlife preservation. It also supports creative economy actors in the development of value-added products, particularly souvenirs. Furthermore, Rahmat International Wildlife Museum and Gallery places a strong emphasis on Occupational Health and Safety (OHS), ensuring a safe working environment. The existence of documented company rules and regulations underscores transparency and accountability.

Moreover, the museum places a strong focus on document preservation and storage, essential for maintaining historical records and information related to its business activities. The implementation of collection conservation programs aligns with the museum's mission of preserving wildlife. The active execution of exhibition programs ensures an engaging experience for visitors, and the commitment to building cleanliness and maintenance contributes to a pleasant environment. Lastly, the implementation of management performance evaluations reflects a commitment to continuous improvement and effective leadership within the museum's operations. Overall, these findings depict a well-structured and proactive organizational framework within Rahmat International Wildlife Museum and Gallery, supporting its mission and goals effectively.

**Table 5.** Suitability Assessment of Human Resources Sub-elements

Assessment Criteria	Check	Suitability Description
Presence of a curator	✓	This museum enterprise has a curator responsible for the management and preservation of collections.
Use of clean and neat uniforms	✓	Human resources within this museum enterprise wear clean and neat uniforms.
Competency development and improvement program	✓	There is a program for the development and enhancement of competencies for human resources within this museum enterprise. This is aimed at improving their knowledge and skills in areas related to the museum.
Regular health check-ups for employees	✓	This museum enterprise conducts regular health check-ups for its employees.
Security personnel	✓	There are security personnel responsible for maintaining security and order within this museum enterprise.

The findings from Table 5, assessing the suitability of human resource sub-elements at Rahmat International Wildlife Museum and Gallery, indicate several positive aspects regarding the museum's human resource management practices. The presence of a curator responsible for collection management and preservation underscores the museum's commitment to the care and maintenance of its collections. Furthermore, the requirement for staff to wear clean and neat uniforms contributes to a professional and tidy appearance, enhancing the visitor experience. The existence of a competency development and improvement program for human resources demonstrates the museum's dedication to enhancing the knowledge and skills of its staff in areas pertinent to the museum. This initiative ensures that employees are well-equipped to fulfill their roles effectively. Additionally, conducting regular health check-ups for employees contributes to their overall well-being and ensures a healthy work environment. Moreover, the presence of security personnel tasked with maintaining security and order within the museum is crucial for visitor safety and protection of valuable exhibits. Overall, these findings highlight Rahmat International Wildlife Museum and Gallery's commitment to human resource development and management practices that support the museum's mission and operational excellence.

**Table 6.** Suitability Assessment of Service Elements

Assessment Criteria	Check	Suitability Description
Direct reception and provision of information via telephone or email regarding museum activities, schedules, and product prices	✓	This museum enterprise serves visitors through telephone inquiries, providing information on museum activities, schedules, and product prices.
Ticket sales/purchases	✓	There is a ticket sales and purchase service at this museum enterprise.

Assessment Criteria	Check	Suitability Description
Visitor regulations	✓	Visitor regulations are enforced, such as specific prohibitions on bringing food and beverages into the museum area and restrictions on using flash cameras, etc.
Fire prevention and handling of other emergencies	✓	In order to ensure the safety of visitors and the museum's collection, efforts are made for fire prevention and handling other emergency situations.
Research activities	✓	Many students and researchers come for research activities.
Museum and collection security	✓	This museum enterprise maintains the security of the museum and its collection.
Building and environmental cleanliness efforts	✓	In their efforts, the museum maintains building and environmental cleanliness.
Museum activity implementation	✓	The museum has exhibitions, educational programs, and other activities.
Environmental cleanliness and health around the museum area	✓	Cleanliness and environmental health around the museum are top priorities for the museum's operations
Handling visitor/tourist complaints.	✓	This museum enterprise has a mechanism for handling visitor or tourist complaints, often through a comment book.

The findings from Table 6, assessing the suitability of service elements at Rahmat International Wildlife Museum and Gallery, illustrate the museum's strong commitment to providing a comprehensive and visitor-centric experience. The museum excels in directly receiving and disseminating information via telephone and email, ensuring that visitors are well-informed about museum activities, schedules, and product prices. Moreover, the presence of ticket sales and purchase services facilitates a smooth visitor experience. Enforcing visitor regulations, including restrictions on bringing food and beverages and the use of flash cameras, contributes to maintaining a respectful and safe environment within the museum. The museum also demonstrates a proactive approach to safety and security by implementing fire prevention measures and emergency handling procedures. Additionally, the presence of research activities, coupled with the maintenance of museum and collection security, highlights the institution's commitment to knowledge dissemination and collection preservation. Furthermore, Rahmat International Wildlife Museum and Gallery's commitment to cleanliness extends beyond its premises, as it prioritizes environmental cleanliness and health around the museum area. The proactive handling of visitor and tourist complaints underscores the museum's dedication to continuously improving its services and addressing visitor concerns promptly. Overall, these findings emphasize the museum's visitor-oriented approach and its focus on safety, security, and environmental responsibility.

**Table 7.** Suitability Assessment of Business Product Requirements Elements

Assessment Criteria	Check	Suitability Description
Clean and well-maintained museum building with good air circulation and lighting that meets fitness and safety requirements	✓	This business ensures that the museum building is clean and well-maintained, with good air circulation and lighting, meeting fitness and safety requirements.
Clean and safe entrance and exit doors that are easily accessible to visitors	✓	For the exit door, some visitors may find it slightly challenging to locate the way out as it requires passing through the café first.



Open (outdoor) and/or closed (indoor) exhibition spaces equipped with exhibition facilities	✓	This museum has both outdoor and indoor exhibition spaces, each equipped with appropriate exhibition facilities
Cultural heritage collections with proof of ownership in accordance with statutory regulations and/or non-cultural heritage collections equipped with clear information illustrations and labels with good lighting	✓	The cultural heritage collections in this museum are equipped with proof of ownership in accordance with statutory regulations. Additionally, non-cultural heritage collections have clear labels and information illustrations.
Museum library	✓	A library is available in this museum
Guided tours by certified or licensed museum guides issued by competent authorities	-	There are no certified or licensed museum guides issued by authorities in this museum enterprise.
Clean and well-maintained introduction area with good air circulation and lighting	✓	The museum's introduction area is clean and well-maintained, with good air circulation and lighting
Directional signs to museum facilities that are easy to see and read	✓	In this enterprise, there are directional signs that are easy to see and read to all museum facilities

The findings from Table 7, assessing the suitability of business product requirement elements at Rahmat International Wildlife Museum and Gallery, indicate a commitment to maintaining a high standard of museum facilities and services. The museum excels in ensuring that the museum building is clean and well-maintained, with proper air circulation and lighting that meets fitness and safety requirements. However, it's noted that some visitors may find the exit door slightly challenging to locate, as it requires passing through the café first. The presence of both outdoor and indoor exhibition spaces equipped with appropriate facilities enhances the visitor experience, offering diverse and engaging displays. Moreover, the museum diligently complies with statutory regulations regarding the proof of ownership for cultural heritage collections. Non-cultural heritage collections are also well-labeled and illustrated for visitor understanding. The existence of a museum library underscores the institution's commitment to providing educational resources. However, it's important to note that there are no certified or licensed museum guides issued by competent authorities, which may be an area for potential improvement in enhancing visitor experiences. Furthermore, the museum's introduction area is well-maintained, contributing to a positive first impression for visitors. Clear and visible directional signs guide visitors to various museum facilities, ensuring easy navigation.

**Table 8.** Suitability Assessment of Business Management System Elements

Assessment Criteria	Check	Suitability Description
Possesses SOP documents and/or technical guidelines for business planning work execution	✓	This museum has SOP documents, as well as technical guidelines for business planning work execution.
Executes documented SOP and/or technical guidelines for business planning work	✓	The implementation of SOP and/or technical guidelines for business planning work in this museum is documented
Possesses SOP documents and/or technical guidelines for business management work execution	✓	This museum has SOP documents, as well as technical guidelines for business management work execution
Executes documented SOP and/or technical guidelines for business management work	✓	Everything done by this museum is recorded, including SOP, and/or technical guidelines for business management work execution

Possesses SOP documents and/or technical guidelines for customer business communication work execution	✓	This museum has standard operating procedure (SOP) documents and/or technical guidelines for performing customer business communication tasks
Executes documented SOP and/or technical guidelines for customer business communication work	✓	In the museum's operations, there is documentation of standard operating procedures (SOP) and/or technical guidelines for customer business communication work execution
Possesses SOP documents and/or technical guidelines for continuous business monitoring, evaluation, and improvement	✓	This museum has standard operating procedure (SOP) documents and/or technical guidelines related to the execution of tasks for continuous business monitoring, evaluation, and improvement
Executes documented SOP and/or technical guidelines for continuous business monitoring, evaluation, and improvement work	✓	All activities in this museum are recorded, including continuous business monitoring, evaluation, and improvement, as well as standard operating procedures (SOP) and/or technical guidelines.

The findings from Table 8, assessing the suitability of business management system elements at Rahmat International Wildlife Museum and Gallery, reveal a well-documented and structured approach to various aspects of business management. The museum has established standard operating procedure (SOP) documents and technical guidelines for critical areas such as business planning, business management, customer communication, and continuous business improvement. Notably, the museum ensures that the implementation of these procedures and guidelines is well-documented, reflecting a commitment to transparency and accountability in its operations. This systematic approach is valuable for maintaining consistency and efficiency in the management of the museum's business activities.

The assessment of the suitability of the museum's landscape and facility design is crucial in establishing business standards. Regulation No. 4 of 2021 from the Ministry of Tourism and Creative Economy sets standards for museum space arrangement, including exhibition areas, educational spaces, collection rooms, and service areas. Examining the suitability table, it becomes evident that numerous factors influence facility and landscape design, such as the assessment of (1) facility elements. To meet these requirements, facility design must consider appropriate and efficient placement. Easily accessible layouts and integrated open spaces are other factors that can facilitate museum space organization. (2) Facility elements: Facility design must comply with these requirements through proper placement, environmentally friendly design, and sufficient availability. Landscape design can also support the availability of minimum facilities by considering the placement of parking areas, waste disposal locations, and comfortable public areas. Lastly, (3) environmental condition elements; facility design should consider an appealing appearance and integration with the surrounding environment. Among these three intersecting elements of facility and landscape design, certain aspects that do not currently meet the assessment standards. Therefore, it is advisable to recommend those criteria that do not conform as suggestions for improvement. The goal is to ensure quality, safety, and an excellent visitor experience while exploring the museum.

### 3.3 Landscape Design Proposal

Figures 2, 3, and 4 depict the existing condition of the first floor at Rahmat International Wildlife Museum and Gallery utilizing AutoCAD features. Figure 5 proposes some design proposals. These landscape design proposals aim to enhance the overall accessibility, inclusivity, and operational efficiency of the museum, positively impacting the experience of both visitors and staff.

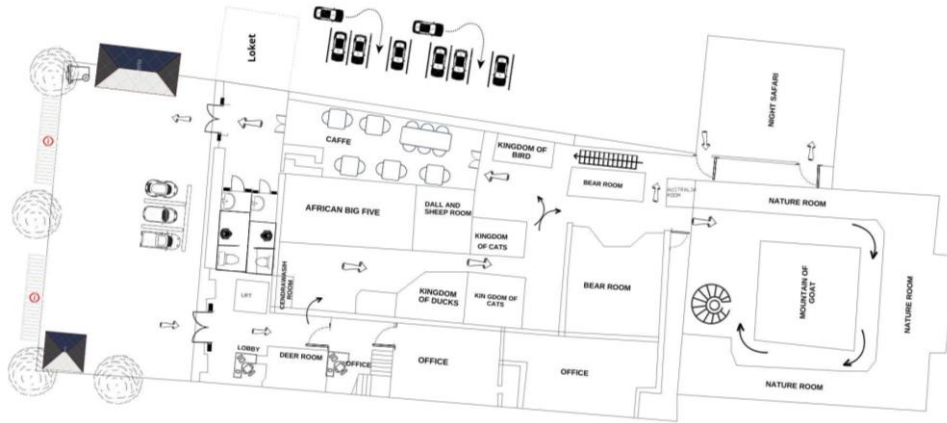


Figure 2. Existing layout, 1st floor

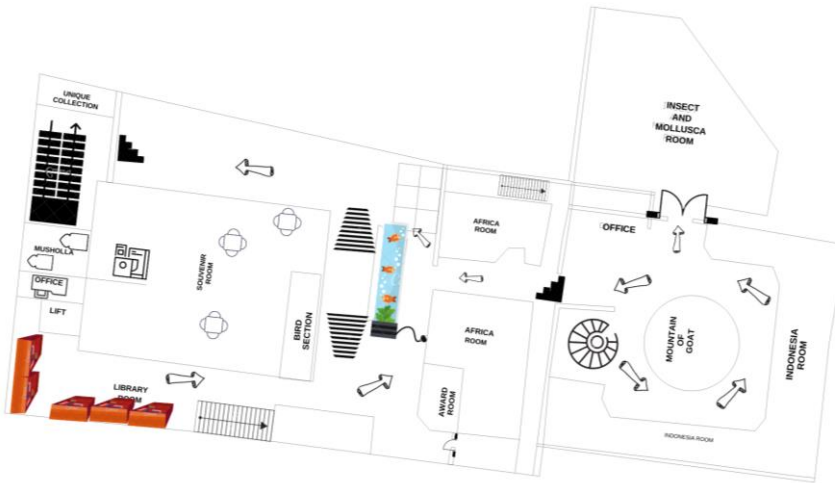


Figure 3. Existing layout, 2nd floor

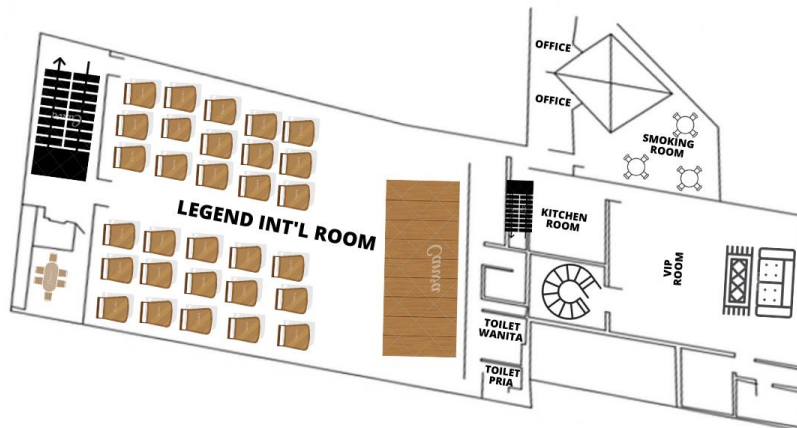
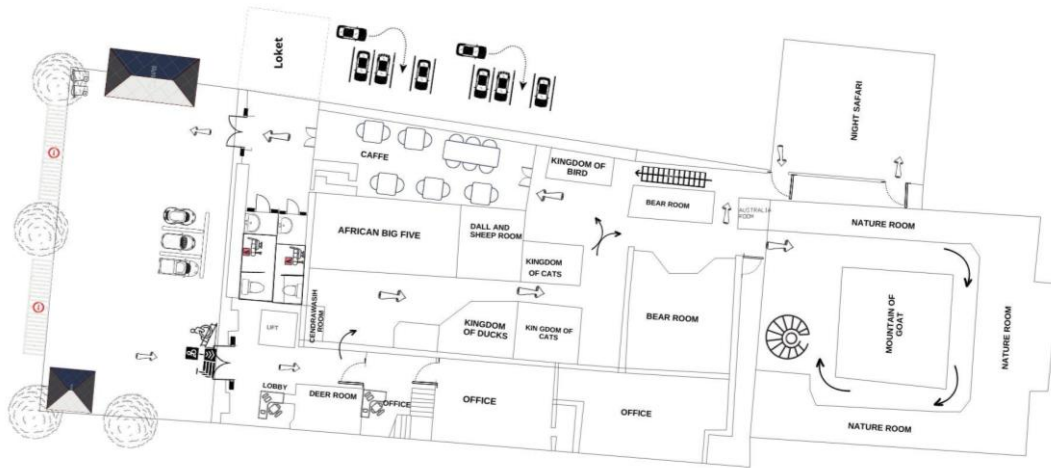


Figure 4. Existing layout, 3rd floor



**Figure 5.** Landscape Design Proposal

In the context of Rahmat International Wildlife Museum and Gallery, three primary design proposals have been identified for facility improvements. These proposals have emerged through a comparative analysis of the museum's existing conditions with the benchmarks established in the Minister of Tourism and Creative Economy Regulation No. 4 of 2021. The three main proposals encompass enhancements to accessibility through the addition of an accessibility ramp, the provision of an accessible toilet facility, and the establishment of separate waste storage facilities to segregate organic and inorganic waste. By implementing these proposals, it is anticipated that the museum can become more inclusive, comfortable, and environmentally sustainable, aligning with relevant regulatory standards.

### 3.3.1 Accessibility Ramp

**Proposal:** The proposal suggests the addition of an accessibility ramp to accommodate visitors with physical disabilities, ensuring equitable access to the museum.

**Design Recommendation:** To execute this proposal effectively, it is essential to design the ramp by recognized accessibility standards. This entails determining the appropriate slope or incline of the ramp, installing secure handrails for support and safety, ensuring there is ample and well-distributed lighting along the ramp, and incorporating clear signage throughout the museum to guide visitors to the ramp's location. The goal is to create a ramp that not only complies with regulations but also offers a user-friendly and safe experience for all visitors, regardless of their mobility challenges.

### 3.3.2 Accessible Toilet

**Proposal:** In conjunction with the accessibility ramp, the proposal advocates for the installation of an accessible toilet facility.

**Design Recommendation:** Designing an accessible toilet facility involves providing a dedicated and spacious area that can be easily accessed by visitors using wheelchairs or those with limited mobility. Crucially, the door should be wide enough to accommodate wheelchairs comfortably. Inside the facility, fixtures such as the toilet, sink, and handrails should be positioned at appropriate heights and locations, ensuring they are within easy reach of individuals with disabilities. Additionally, the design should incorporate appropriate signage indicating the location of the accessible toilet within the museum. This initiative aims to enhance the overall convenience and inclusivity of the museum for all visitors.

### 3.3.3 Separate Organic and Inorganic Waste Storage

**Proposal:** The proposal recommends the provision of distinct temporary storage facilities for organic and inorganic waste, simplifying the waste management process.

**Design Recommendation:** Designing such waste storage facilities entails creating a designated area or room equipped with separate waste bins for organic and inorganic waste materials. These bins should be easily accessible to museum staff responsible for waste disposal. Moreover, it is essential to ensure that the waste storage area is covered or enclosed to prevent odors, pests, and

unsightly waste from being visible to visitors. The spatial arrangement should be designed with efficiency in mind, enabling staff to easily sort and manage waste, thereby contributing to a cleaner and more organized museum environment. This initiative aligns with environmental sustainability practices and promotes a hygienic and pleasant atmosphere within the museum.

#### 4 CONCLUSION

In conclusion, the comprehensive assessment of Rahmat International Wildlife Museum and Gallery has revealed a museum that is committed to providing a positive and enriching experience for its visitors. The institution excels in various aspects, including maintaining well-organized administrative areas, ensuring visitor convenience and hygiene, and actively engaging in educational and preservation activities. Rahmat Museum's commitment to cultural preservation, creative economy support, and a safe working environment reflects a strong organizational structure and management framework. Additionally, its dedication to human resource development and visitor-oriented services further enhances its appeal.

However, this assessment has also highlighted areas where improvements are needed, such as waste management practices, physical accessibility enhancements, and the availability of certified museum guides. The proposed landscape design enhancements, including the addition of accessibility ramps, accessible toilets, and improved waste storage facilities, offer practical solutions to address these issues. By implementing these recommendations, Rahmat International Wildlife Museum and Gallery can continue to uphold its mission of preserving wildlife and cultural heritage while offering an inclusive, educational, and enjoyable experience for all its visitors. This comprehensive approach to assessment and enhancement underscores the institution's commitment to continuous improvement and excellence in the field of cultural and environmental preservation.

#### REFERENCES

- Amalia, J. R., & Hanika, I. M. (2021). Tourism in digital era: The influence of digital marketing on the intention to visit museum. *Jurnal Komunikasi: Malaysian Journal of Communication*, 37(3), 274–287. <https://doi.org/10.17576/JKMJC-2021-3703-16>
- Astono, A. S. (2018). *PERANCANGAN BANGUNAN MUSEUM GUNUNG SINABUNG* [Skripsi]. Universitas Sumatera Utara.
- Castillo, R. L. A., & Zegarra, X. D. L. (2020). The tours in virtual museums a didactic opportunity in social sciences. *2020 X International Conference on Virtual Campus (JICV)*, 1–4. <https://doi.org/10.1109/JICV51605.2020.9375662>
- Creswell, J. W. (2007). *Qualitative Inquiry \* Research Design: Choosing among Five Approach* (2nd Editio). Sage Publications, Inc.
- Creswell, J. W. (2018). Penelitian Kualitatif & Desain Riset: Memilih di antara Lima Pendekatan (diterjemahkan dari *Qualitative Inquiry & Research Design: Choosing Among Five Approach*, Third Edition). In *Pustaka Pelajar* (3rd ed., Vol. 3, Issue 1). Pustaka Pelajar.
- Diniyah, F., Gesa, L. B., & Khoirullah. (2018). Pengaruh Daya Tarik Wisata terhadap Minat Berkunjung Ulang Wisatawan (Studi di Museum Benteng Vrederburg Yogyakarta). *INARXiv, Arsip Penelitian Mahasiswa STP AMPTA Yogyakarta*. <https://doi.org/10.31227/osf.io/2n3cu>
- Dulyan, A. (2010). AUXie: Initial evaluation of a blind-accessible virtual museum tour. In *ACM International Conference Proceeding Series* (pp. 272–275). <https://doi.org/10.1145/1952222.1952280>
- Gutowski, P., & Kłos-Adamkiewicz, Z. (2020). Development of e-service virtual museum tours in Poland during the SARS-CoV-2 pandemic. *Procedia Computer Science*, 176, 2375–2383. <https://doi.org/10.1016/j.procs.2020.09.303>
- Indrianty, S., & Rahma, A. (2019). Pengaruh Citra terhadap Keputusan Berkunjung di Museum Geologi Bandung. *Tourism Scientific Journal*, 5(1), 115–127. <https://doi.org/https://doi.org/10.32659/tsj.v5i1.78>





- Kabassi, K. (2018). Heuristics and fuzzy multi-criteria decision making for evaluating museum virtual tours. *International Journal of the Inclusive Museum*, 11(3), 1–21.  
<https://doi.org/10.18848/1835-2014/CGP/v11i03/1-21>
- Kabassi, K., Amelio, A., Komianos, V., & Oikonomou, K. (2019). Evaluating Museum Virtual Tours: The Case Study of Italy. *Information*, 10(11), 351.  
<https://doi.org/10.3390/info10110351>
- Kersten, T. (2018). 3D Models and Virtual Tours for a Museum Exhibition of Vietnamese Cultural Heritage Exhibits and Sites. In *Lecture Notes in Computer Science (including subseries Lecture Notes in Artificial Intelligence and Lecture Notes in Bioinformatics)* (Vol. 11196, pp. 528–538). [https://doi.org/10.1007/978-3-030-01762-0\\_46](https://doi.org/10.1007/978-3-030-01762-0_46)
- Kostoska, G. (2016). Video-mediated participation in virtual museum tours for older adults. In *Proceedings - D and E 2016: 10th International Conference on Design and Emotion - Celebration and Contemplation* (pp. 100–106).  
[https://api.elsevier.com/content/abstract/scopus\\_id/84995679069](https://api.elsevier.com/content/abstract/scopus_id/84995679069)
- Lin, Y.-C., Wu, K.-C., & Tsau, S.-Y. (2019). Effect of Virtual Reality at Exhibitions on Visitor Experiences Underpinned by Museum Studies: “Seeing The Past Through The Present - The Virtual Reality Of The Taipei West District Beimen VR Tour.” *2019 IEEE 2nd International Conference on Knowledge Innovation and Invention (ICKII)*, 198–201.  
<https://doi.org/10.1109/ICKII46306.2019.9042706>
- Lopez-Menendez, M. (2019). Online martyrs: Virtual tours of the miguel agustín pro museum, and the José Simeón Cañas Central American University Martyrs. *Religions*, 10(9).  
<https://doi.org/10.3390/rel10090523>
- Luca, V. de. (2019). Open source for museums: The virtual tour for the Museum of the Origins (Sapienza University of Rome). *Archeologia e Calcolatori*, 30, 479–482.  
<https://doi.org/10.19282/ac.30.2019.34>
- Messina, N. (2018). Museum for All: Wearable Immersive Virtual Tours in Museums for People with Neurodevelopmental Disorders. In *IOP Conference Series: Materials Science and Engineering* (Vol. 364, Issue 1). <https://doi.org/10.1088/1757-899X/364/1/012047>
- Miles, M. B., Huberman, A. M., & Saldana, J. (2014). *Qualitative Data Analysis: A Method Sourcebook* (Edition 3). SAGE Publications, Inc.
- Nababan, A., Liyushiana, Bakkara, A., Damanik, M., & Denny, A. (2023). Evaluasi Penataan Fasilitas dan Lanskap di Restaurant Beresiko Menengah Rendah Berbasis Permenparekraf 4/2021: Kasus di Teras Sejiwa Café Medan. *Journal of Mandalika Review*, 2(2).  
<https://doi.org/10.55701/mandalika.v2i2.83>
- Nuzura, Alamsyah, & Yusya. (2016). Analisis Penilaian Wisatawan Bencana terhadap Citra Pariwisata Aceh (Survey pada Wisatawan Museum Tsunami Tahun 2016). *Jurnal Imu Kebencanaan (JIKA)*, 3(3), 105–109.
- Peng, J. (2022). Research on Digitalization of the Museum Industry in China- Based on SWOT-PEST Model. In *Asian Journal of Social Science Studies* (Vol. 7, Issue 1, p. 31). July Press Pte. Ltd. <https://doi.org/10.20849/ajsss.v7i1.982>
- Putra, A. F., & Mukminan, M. (2018). The Development of a Cultural Tourism in Batik Museum of Yogyakarta by a SWOT Analysis. In *Proceedings of the Annual Conference on Social Sciences and Humanities*. SCITEPRESS - Science and Technology Publications.  
<https://doi.org/10.5220/0007418602420248>
- Schulmeister, M. K. (2020). A three-Dimensional, virtual tour of the Johnston Geology Museum. In *GSA Today* (Vol. 30). <https://doi.org/10.1130/GSATG470GW.1>
- Tavčar, A. (2016). Recommender system for virtual assistant supported museum tours. *Informatica (Slovenia)*, 40(3), 279–284.  
[https://api.elsevier.com/content/abstract/scopus\\_id/85002648021](https://api.elsevier.com/content/abstract/scopus_id/85002648021)
- Teker, N. (2016). Adapadation of the virtual museum virtual tour satisfaction scale into Turkish: Validity and reliability study. *Milli Egitim*, 1(209), 314–335.  
[https://api.elsevier.com/content/abstract/scopus\\_id/85015217079](https://api.elsevier.com/content/abstract/scopus_id/85015217079)

